



Pheasant Hollow Business Park

Building #9: 9789 South 600 West, Sandy Utah 84070



Roderick Realty
SERVICES

www.roderickrealty.com

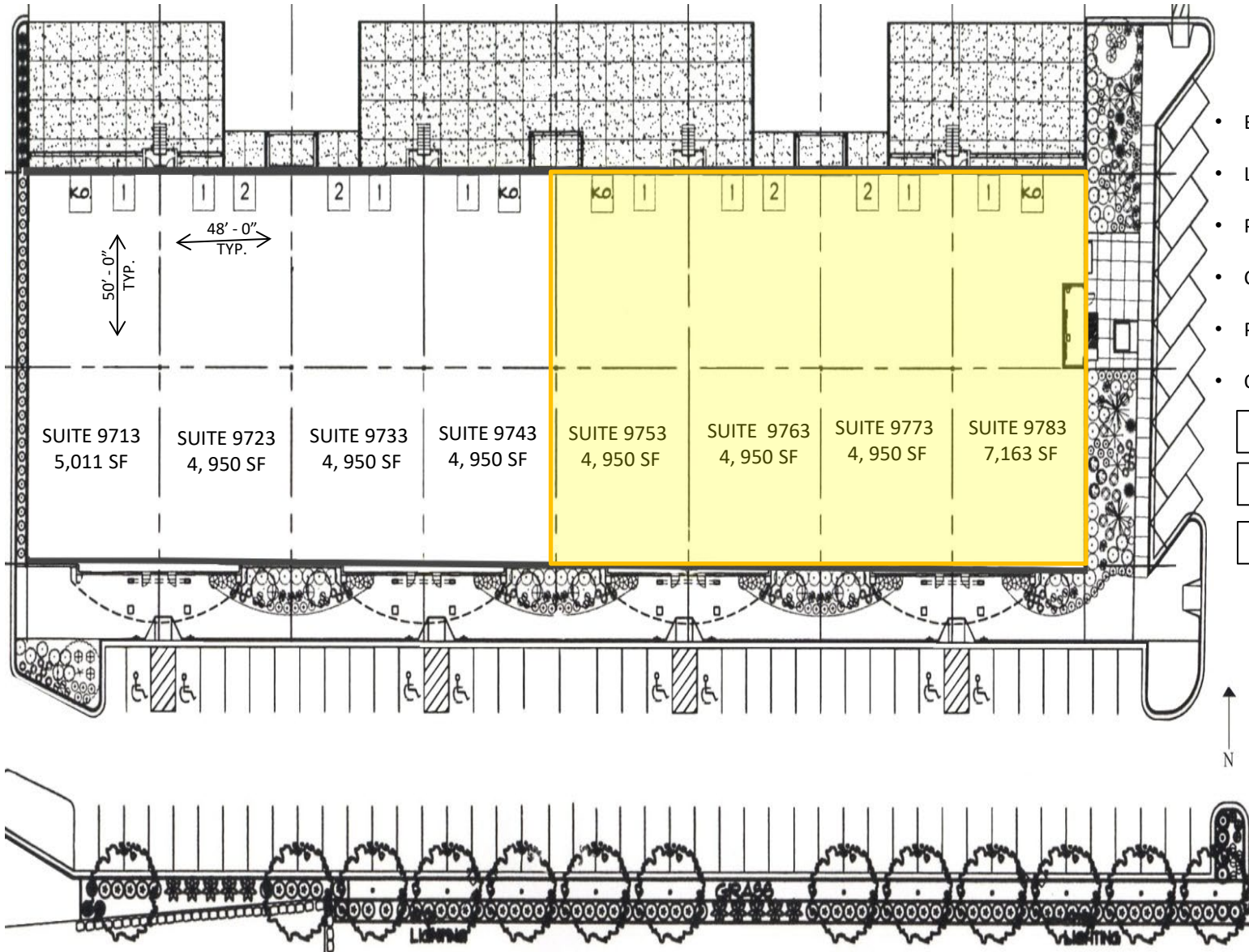
801-506-5005

- Class A Flex Space: office, retail, showroom, warehouse
- Ground Level & Dock-High Doors
- 24' Clear Height
- Mezzanine Office Available
- Easy I-15 and South Towne Mall Access



Pheasant Hollow Business Park

Building #9: 9789 South 600 West, Sandy Utah 84070



Building Information

- Building Size: 41,874 SF
- Land Size: 3.09 ACRES
- Parking: 97 STALLS
- Clear Height: 24'
- Power: 2000 AMPS AT 277/480 VOLTS
- Overhead Doors:

- 1 = 8'x10' Dock High Door
- 2 = 12'x14' Ground Level Door
- KO = 12' x 14' Knockout Panel



Roderick Realty SERVICES

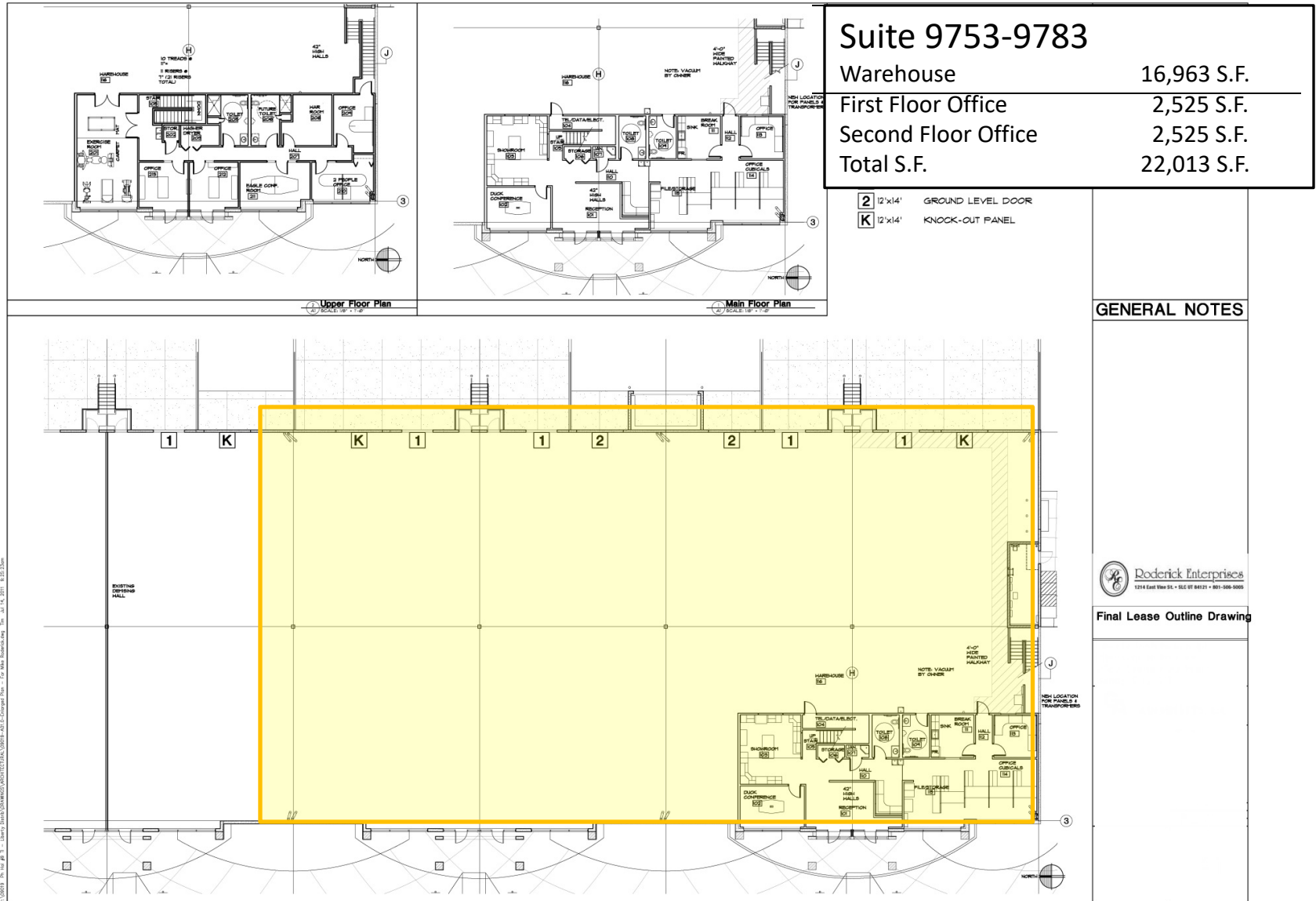
www.roderickrealty.com
801-506-5005

The information contained herein has been given to us by the owner or obtained from other reliable sources. We have no reason to doubt its accuracy but we do not guarantee it. Vacancy factors, projections, opinions, assumptions or estimates used herein are for example only and represents the current or future performance of the property. The value of this investment depends on tax and other factors which should be evaluated by your tax financial and legal advisors. YOU AND YOUR ADVISOR SHOULD VERIFY PROPERTY INFORMATION TO DETERMINE TO YOUR SATISFACTION THE PROPERTY FOR YOUR NEEDS.



Pheasant Hollow Business Park

Building #9: 9789 South 600 West, Sandy Utah 84070



Roderick Realty
SERVICES

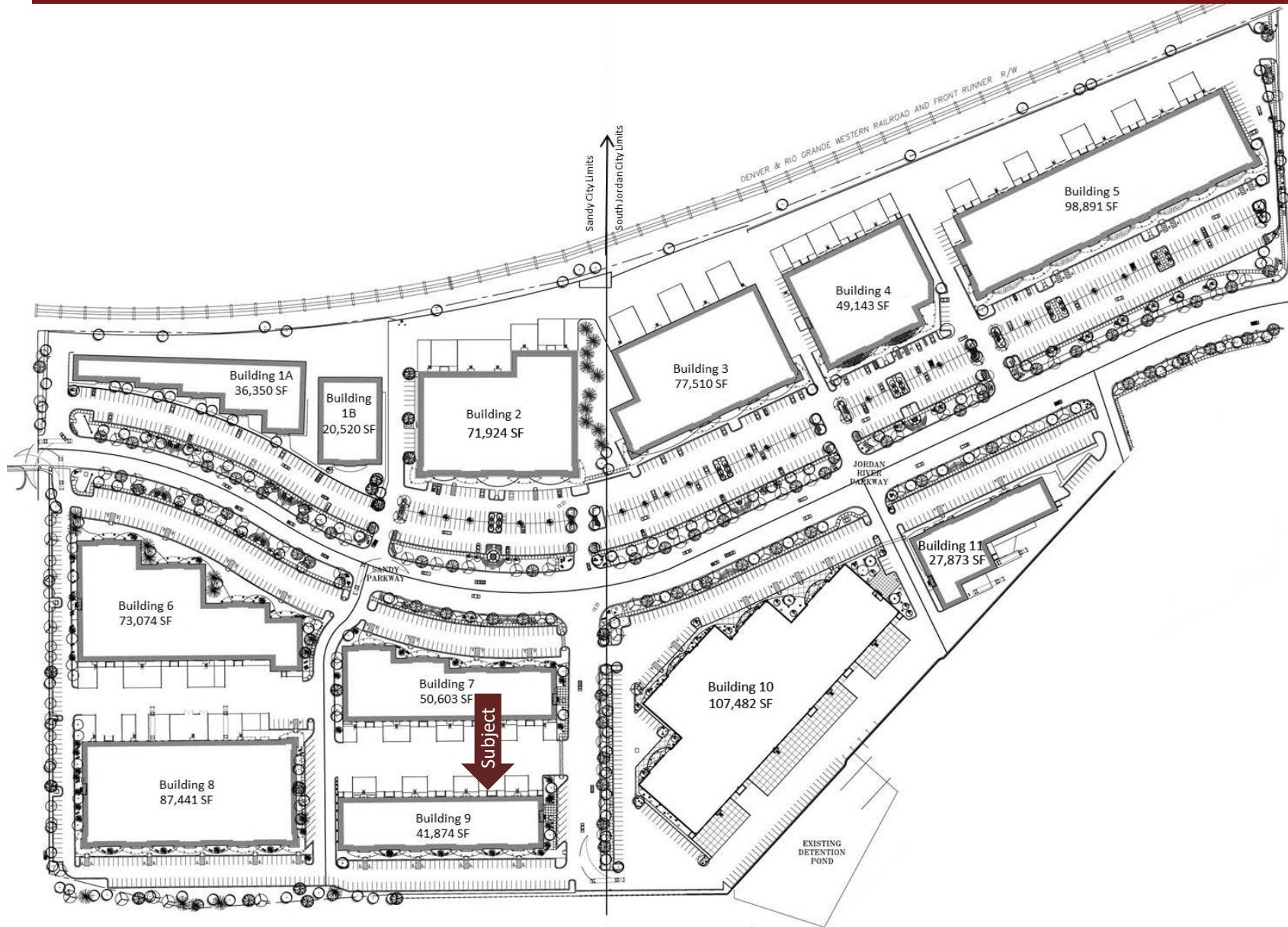
www.roderickrealty.com
801-506-5005

The information contained herein has been given to us by the owner or obtained from other reliable sources. We have no reason to doubt its accuracy but we do not guarantee it. Vacancy factors, projections, opinions, assumptions or estimates used herein are for example only and represents the current or future performance of the property. The value of this investment depends on tax and other factors which should be evaluated by your tax financial and legal advisors. YOU AND YOUR ADVISOR SHOULD VERIFY PROPERTY INFORMATION TO DETERMINE TO YOUR SATISFACTION THE PROPERTY FOR YOUR NEEDS.



Pheasant Hollow Business Park

Building #9: 9789 South 600 West, Sandy Utah 84070



Roderick Realty
SERVICES

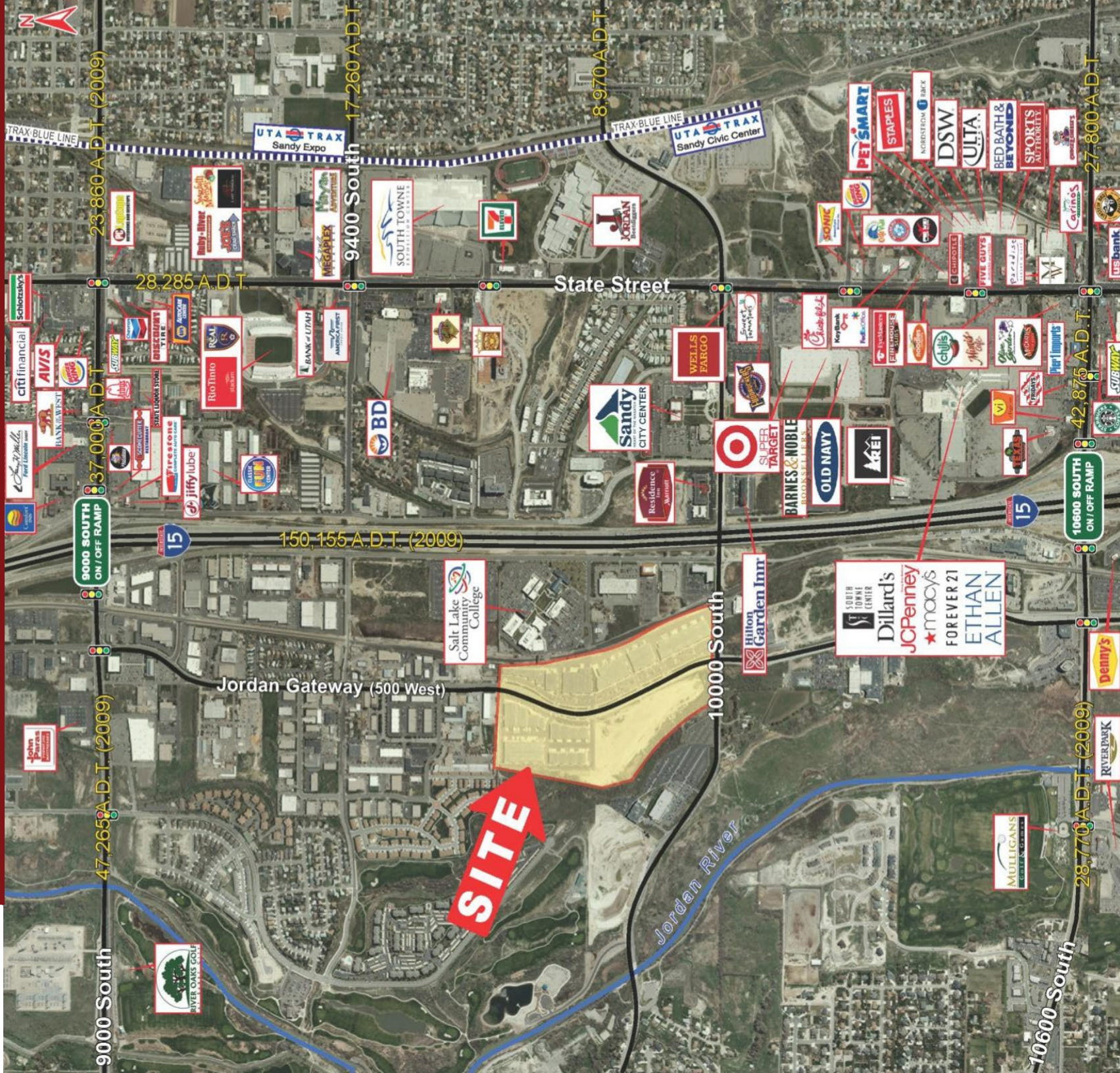
www.roderickrealty.com
801-506-5005

The information contained herein has been given to us by the owner or obtained from other reliable sources. We have no reason to doubt its accuracy but we do not guarantee it. Vacancy factors, projections, opinions, assumptions or estimates used herein are for example only and represents the current or future performance of the property. The value of this investment depends on tax and other factors which should be evaluated by your tax financial and legal advisors. YOU AND YOUR ADVISOR SHOULD VERIFY PROPERTY INFORMATION TO DETERMINE TO YOUR SATISFACTION THE PROPERTY FOR YOUR NEEDS.



Pheasant Hollow Business Park

Building #9: 9789 South 600 West, Sandy Utah 84070



Roderick Realty
SERVICES

www.roderickrealty.com
801-506-5005



The information contained herein has been given to us by the owner or obtained from other reliable sources. We have no reason to doubt its accuracy but we do not guarantee it. Vacancy factors, projections, opinions, assumptions or estimates used herein are for example only and represents the current or future performance of the property. The value of this investment depends on tax and other factors which should be evaluated by your tax financial and legal advisors. YOU AND YOUR ADVISOR SHOULD VERIFY PROPERTY INFORMATION TO DETERMINE TO YOUR SATISFACTION THE PROPERTY FOR YOUR NEEDS.