



Pheasant Hollow Business Park

Building #3: 9847 South 500 West, Sandy, Utah 84070



Roderick Realty
SERVICES

www.roderickrealty.com

801-506-5005

- Class A Flex Space: office, retail, showroom, warehouse
- Ground Level & Dock-High Doors
- 24' to 26' Clear Height
- Mezzanine Office Available
- Easy I-15 and South Towne Mall Access



Pheasant Hollow Business Park #3

9847 South 500 West, Sandy, Utah 84070



Roderick Realty
SERVICES

www.roderickrealty.com
801-506-5005

The information contained herein has been given to us by the owner or obtained from other reliable sources. We have no reason to doubt its accuracy but we do not guarantee it. Vacancy factors, projections, opinions, assumptions or estimates used herein are for example only and represents the current or future performance of the property. The value of this investment depends on tax and other factors which should be evaluated by your tax financial and legal advisors. YOU AND YOUR ADVISOR SHOULD VERIFY PROPERTY INFORMATION TO DETERMINE TO YOUR SATISFACTION THE PROPERTY FOR YOUR NEEDS.



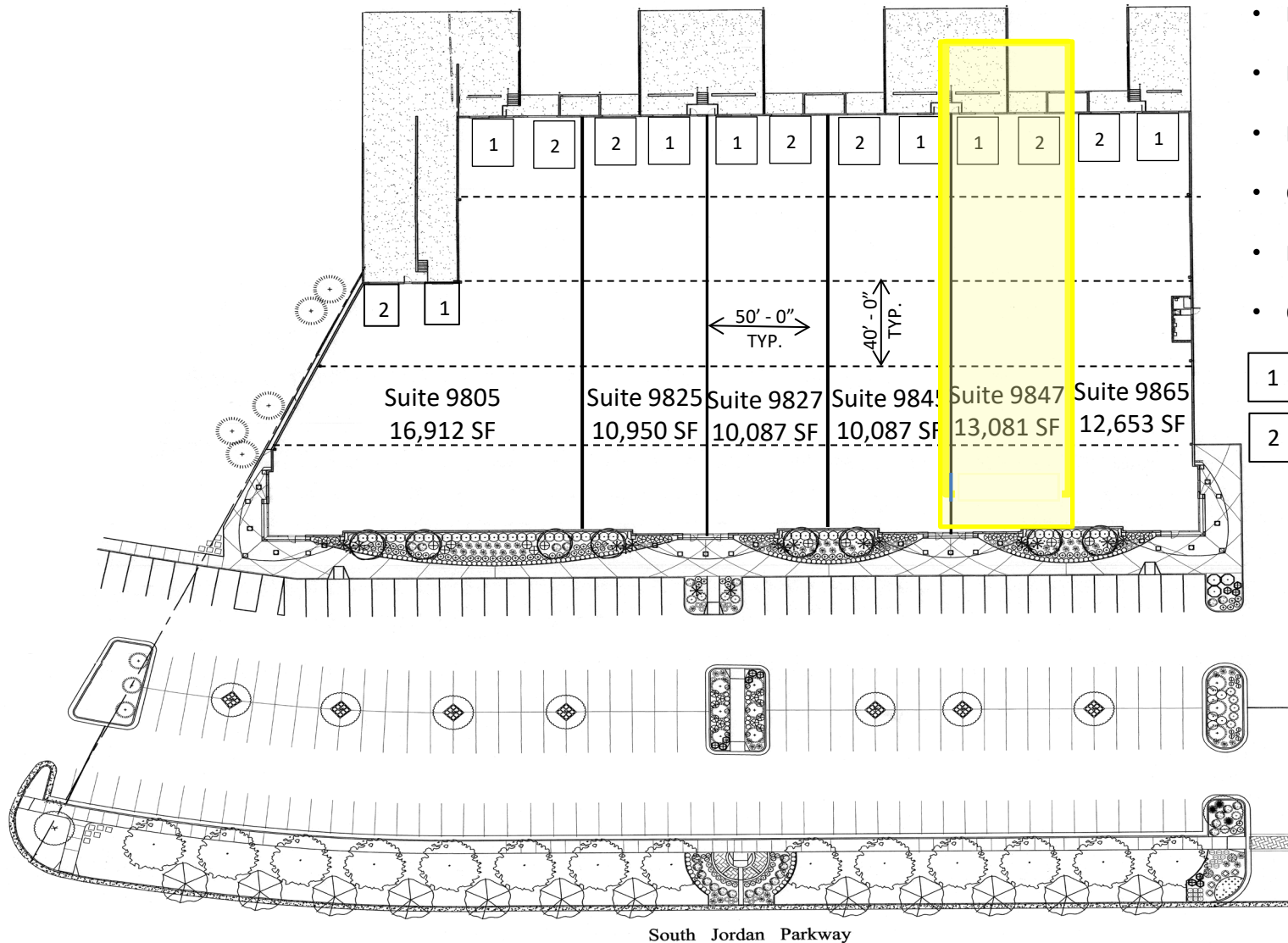
Pheasant Hollow Business Park #3

9847 South 500 West, Sandy, Utah 84070

Building Information

- Building Size: 77,510 SF
- Land Size: 4.55 Acres
- Parking: 215 Stalls
- Clear Height: 24' to 26'
- Power: 1200 AMP AT 277/480 VOLTS
- Overhead Doors:

- 1 = 8'x10' Dock High Door
- 2 = 12'x14' Ground Level Door



South Jordan Parkway



Roderick Realty SERVICES

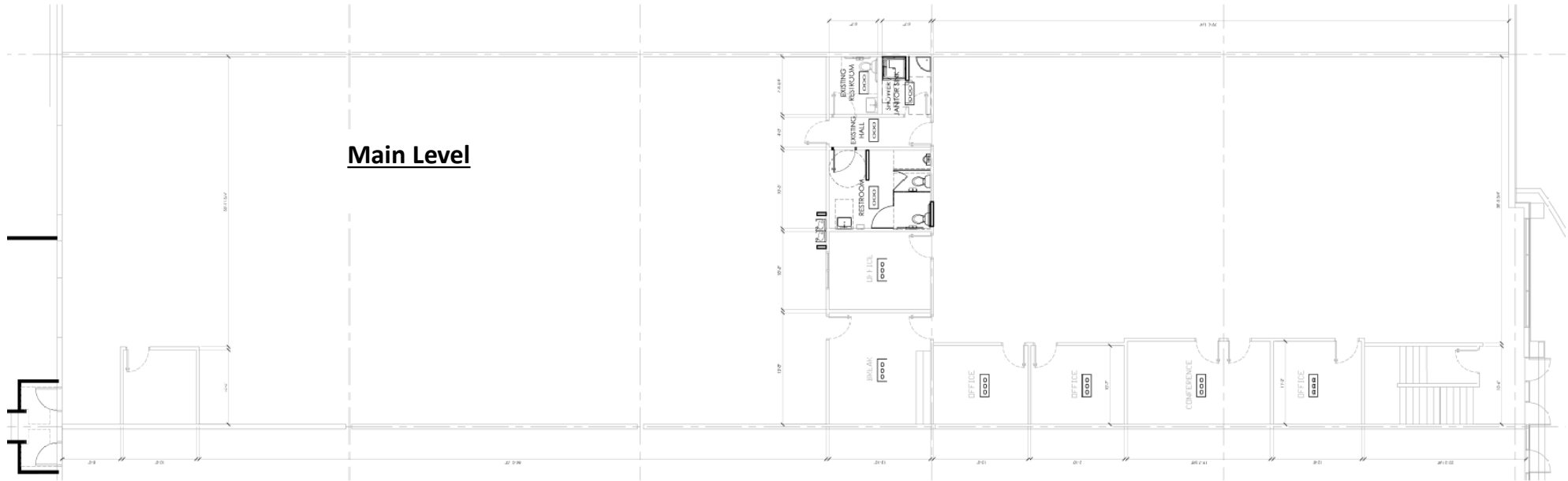
www.roderickrealty.com
801-506-5005

The information contained herein has been given to us by the owner or obtained from other reliable sources. We have no reason to doubt its accuracy but we do not guarantee it. Vacancy factors, projections, opinions, assumptions or estimates used herein are for example only and represents the current or future performance of the property. The value of this investment depends on tax and other factors which should be evaluated by your tax financial and legal advisors. YOU AND YOUR ADVISOR SHOULD VERIFY PROPERTY INFORMATION TO DETERMINE TO YOUR SATISFACTION THE PROPERTY FOR YOUR NEEDS.



Pheasant Hollow Business Park #3

9847 South 500 West, Sandy, Utah 84070

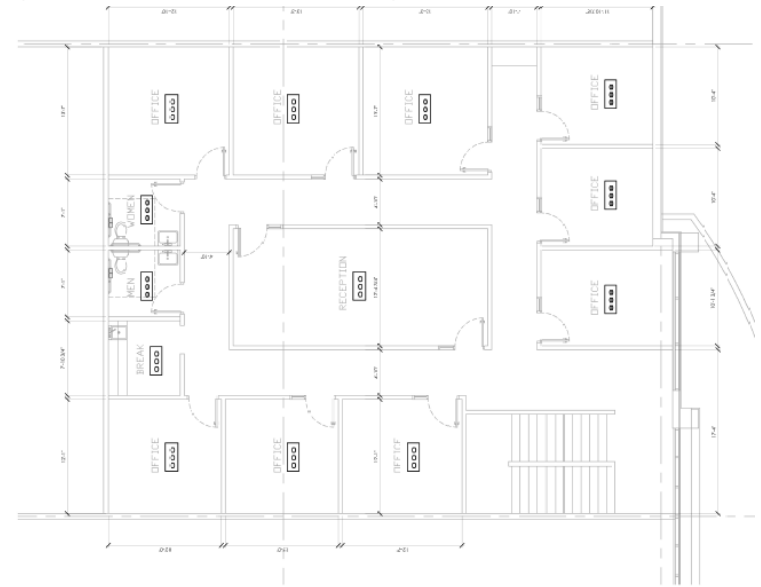


Main Level

- Main Level Office SF: 5,187
- Second Level Office SF: 2,994
- Warehouse SF: 4,900

Total Size: 13,081

Second Level



Roderick Realty
SERVICES

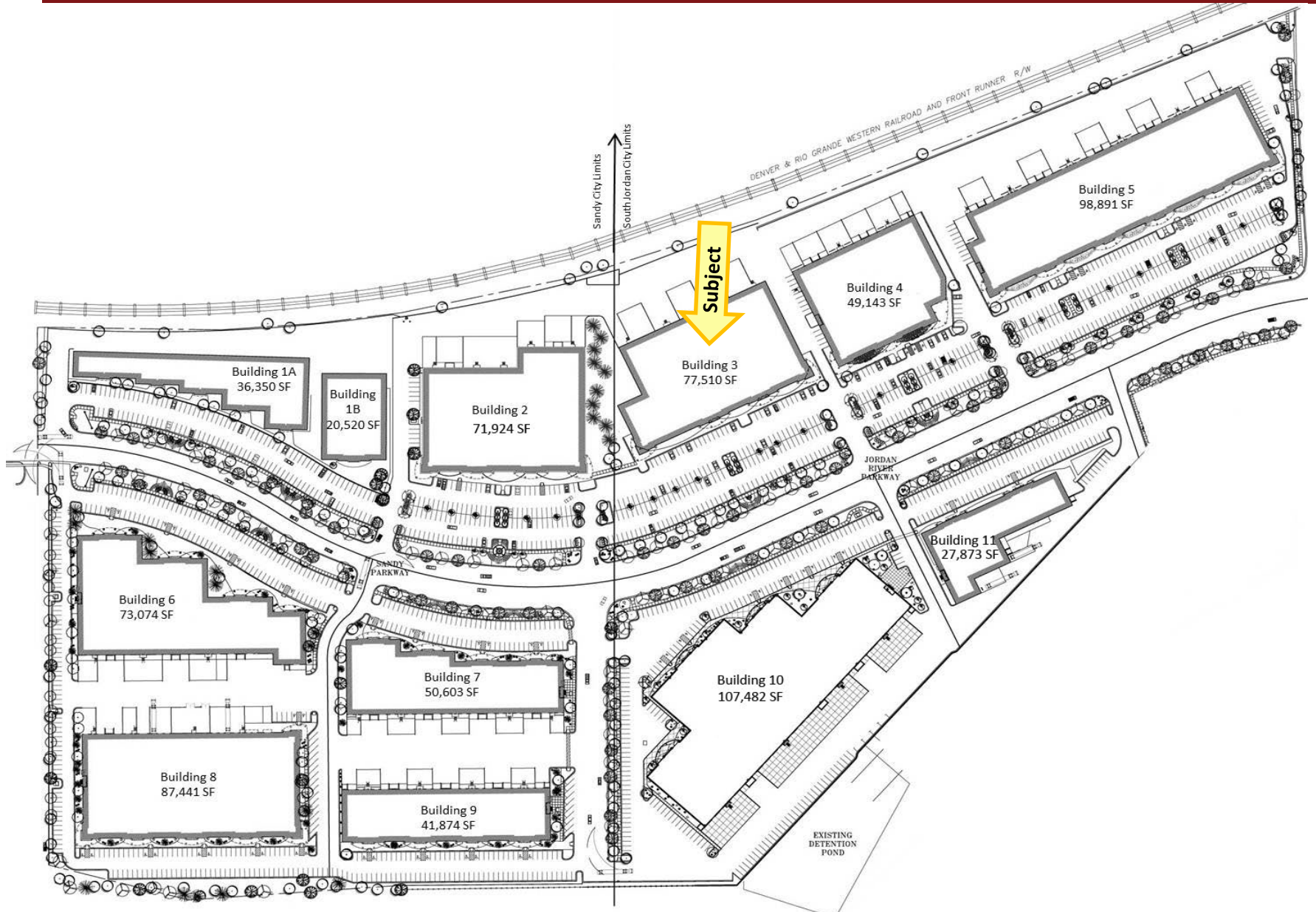
www.roderickrealty.com
801-506-5005

The information contained herein has been given to us by the owner or obtained from other reliable sources. We have no reason to doubt its accuracy but we do not guarantee it. Vacancy factors, projections, opinions, assumptions or estimates used herein are for example only and represents the current or future performance of the property. The value of this investment depends on tax and other factors which should be evaluated by your tax financial and legal advisors. YOU AND YOUR ADVISOR SHOULD VERIFY PROPERTY INFORMATION TO DETERMINE TO YOUR SATISFACTION THE PROPERTY FOR YOUR NEEDS.



Pheasant Hollow Business Park #3

9847 South 500 West, Sandy, Utah 84070



Roderick Realty
SERVICES

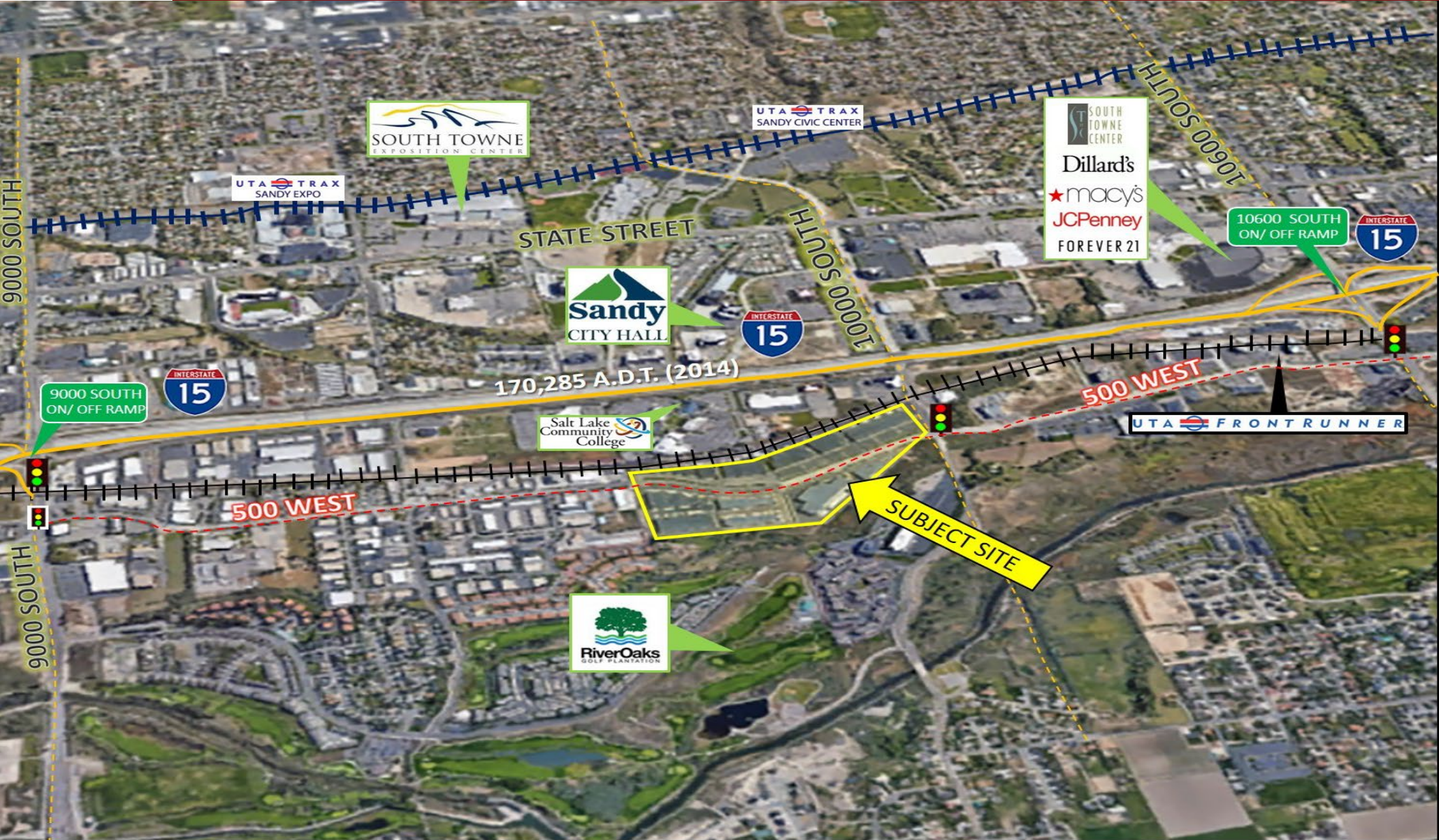
www.roderickrealty.com
801-506-5005

The information contained herein has been given to us by the owner or obtained from other reliable sources. We have no reason to doubt its accuracy but we do not guarantee it. Vacancy factors, projections, opinions, assumptions or estimates used herein are for example only and represents the current or future performance of the property. The value of this investment depends on tax and other factors which should be evaluated by your tax financial and legal advisors. YOU AND YOUR ADVISOR SHOULD VERIFY PROPERTY INFORMATION TO DETERMINE TO YOUR SATISFACTION THE PROPERTY FOR YOUR NEEDS.



Pheasant Hollow Business Park #3

9847 South 500 West, Sandy, Utah 84070



Roderick Realty SERVICES

www.roderickrealty.com
801-506-5005

The information contained herein has been given to us by the owner or obtained from other reliable sources. We have no reason to doubt its accuracy but we do not guarantee it. Vacancy factors, projections, opinions, assumptions or estimates used herein are for example only and represents the current or future performance of the property. The value of this investment depends on tax and other factors which should be evaluated by your tax financial and legal advisors. YOU AND YOUR ADVISOR SHOULD VERIFY PROPERTY INFORMATION TO DETERMINE TO YOUR SATISFACTION THE PROPERTY FOR YOUR NEEDS.