

Idaho Falls Business Park

Building #1 & #2: 2224-2112 North Boulevard, Idaho Falls, Idaho



Roderick Realty
SERVICES

www.roderickrealty.com

801-506-5005

PROPERTY FEATURES:

- Class A Concrete Tilt Construction
- Ground Level & Dock-High Doors
- 28' Clear Height
- Mezzanine Office Available
- Call for pricing
- 480 Volt 3 Phase Power
- Abundant Storefront glass
- ESFR Fire Suppression

Idaho Falls Business Park

Building #1 & #2: 2224-2112 North Boulevard, Idaho Falls, Idaho

Space	Tenant	Size
Suite 100	Lansing Building Products	54,578 SF

Space	Tenant	Size
Suite 100	Little Caesars Pizza	22,521 SF
Suite 200-300	7-Eleven	34,089 SF

LANPING BUILDING PRODUCTS
LEASED
BUILDING #1

Expansion 2,000 S.F.

166'

40'

52'

115'

364'

sonepar

BUILDING 2

GENSCO
 DISTRIBUTOR AND MANUFACTURER OF HVAC PRODUCTS

56'

200'

26'

88'

38'

47'

314'

N BOULEVARD



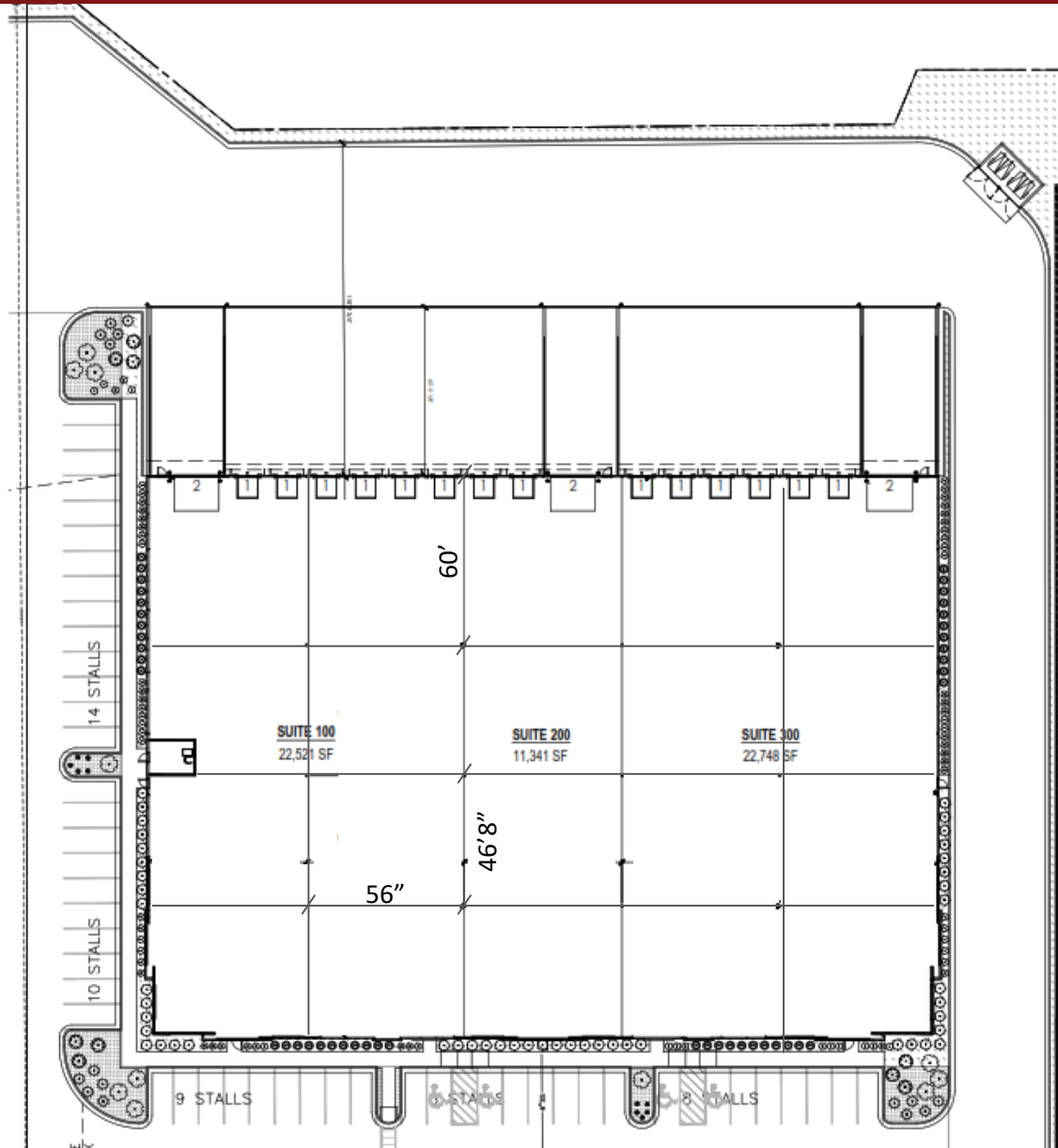
Roderick Realty
SERVICES

www.roderickrealty.com
801-506-5005

The information contained herein has been given to us by the owner or obtained from other reliable sources. We have no reason to doubt its accuracy but we do not guarantee it. Vacancy factors, projections, opinions, assumptions or estimates used herein are for example only and represents the current or future performance of the property. The value of this investment depends on tax and other factors which should be evaluated by your tax financial and legal advisors. YOU AND YOUR ADVISOR SHOULD VERIFY PROPERTY INFORMATION TO DETERMINE TO YOUR SATISFACTION THE PROPERTY FOR YOUR NEEDS.

Idaho Falls Business Park

Building #1 & #2: 2224-2112 North Boulevard, Idaho Falls, Idaho



Name	Rentable
SUITE 100	22,521 SF
SUITE 200	11,341 SF
SUITE 300	22,748 SF
	56,610 SF

BUILDING INFORMATION:

SITE:

4.485 ACRES

PARKING:

76 TOTAL PARKING

OVERHEAD DOORS PROVIDED:

1. 9'X10' DOCK HIGH OVERHEAD DOOR
2. 12'X14' GRADE LEVEL OVERHEAD DOOR



1947

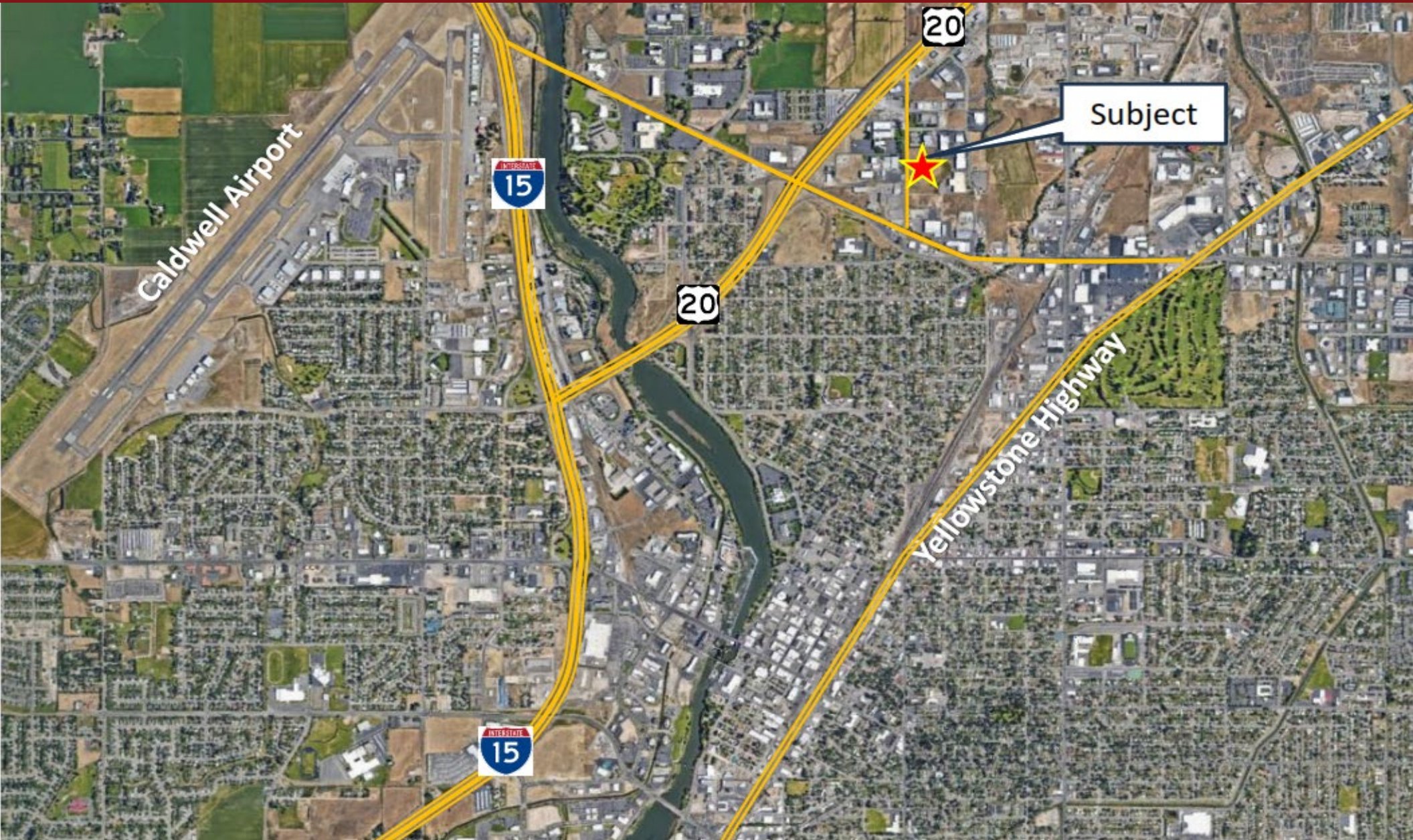
Roderick Realty
SERVICES

www.roderickrealty.com
801-506-5005

The information contained herein has been given to us by the owner or obtained from other reliable sources. We have no reason to doubt its accuracy but we do not guarantee it. Vacancy factors, projections, opinions, assumptions or estimates used herein are for example only and represents the current or future performance of the property. The value of this investment depends on tax and other factors which should be evaluated by your tax financial and legal advisors. YOU AND YOUR ADVISOR SHOULD VERIFY PROPERTY INFORMATION TO DETERMINE TO YOUR SATISFACTION THE PROPERTY FOR YOUR NEEDS.

Idaho Falls Business Park

Building #1 & #2: 2224-2112 North Boulevard, Idaho Falls, Idaho



Roderick Realty
SERVICES

www.roderickrealty.com

201.500.5007

The information contained herein has been given to us by the owner or obtained from other reliable sources. We have no reason to doubt its accuracy but we do not guarantee it. Vacancy factors, projections, opinions, assumptions or estimates used herein are for example only and represents the current or future performance of the property. The value of this investment depends on tax and other factors which should be evaluated by your tax financial and legal advisors. YOU AND YOUR ADVISOR SHOULD VERIFY PROPERTY INFORMATION TO DETERMINE TO YOUR SATISFACTION THE PROPERTY FOR YOUR NEEDS.