

# 9<sup>th</sup> & Vine

6000 South (Vine Street) 900 East, Murray, Utah 84107



Roderick Realty  
SERVICES

[www.roderickrealty.com](http://www.roderickrealty.com)

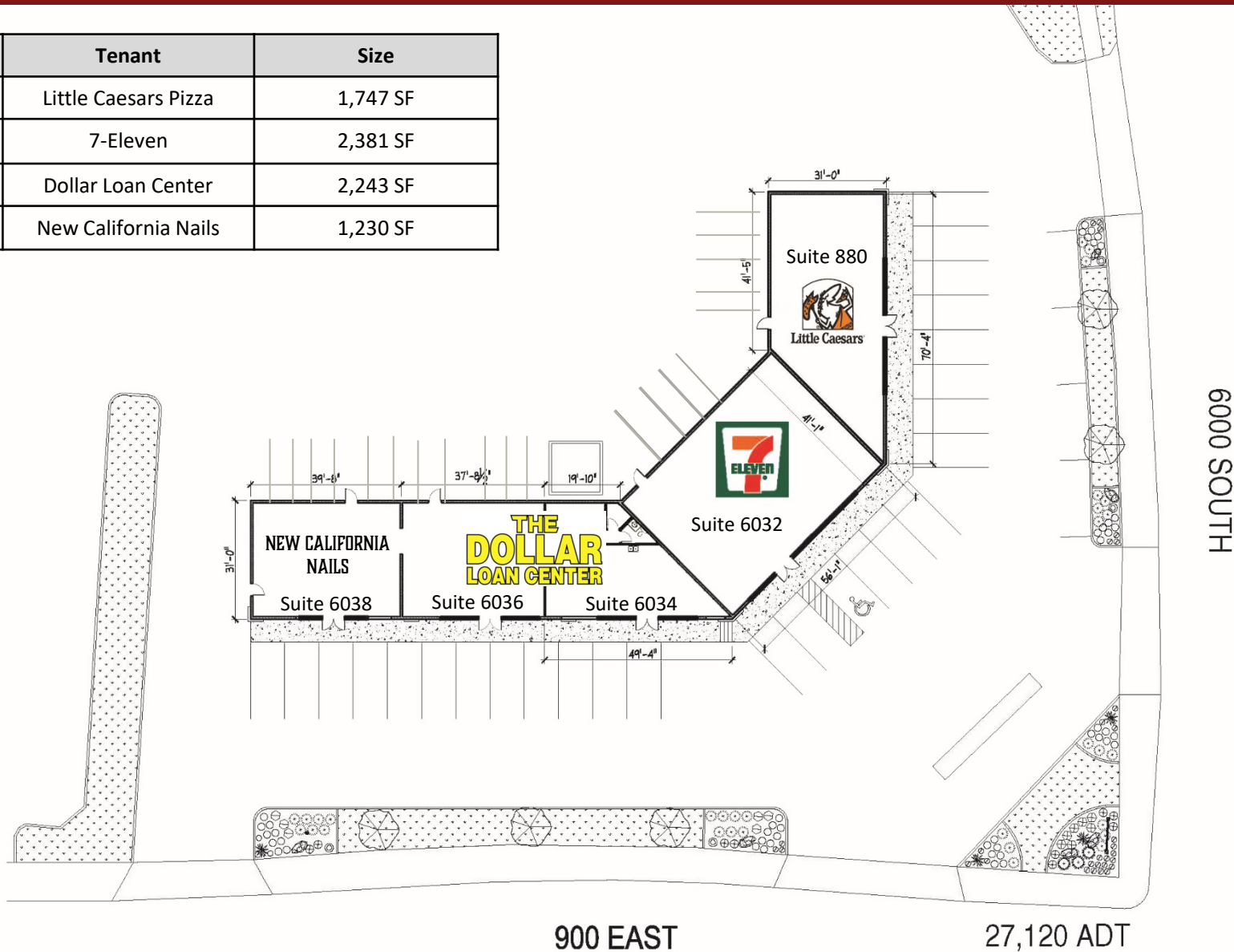
801-506-5005

- Convenient Hard Corner Location
- High Income (\$98,316 Average Income)
- Dense Population 5 Miles: (344,897)
- Easy I-215 Access
- 52,240 Vehicles per day pass this site

# 9th & Vine

6000 South (Vine Street) 900 East, Murray, Utah 84107

Space	Tenant	Size
880	Little Caesars Pizza	1,747 SF
6032	7-Eleven	2,381 SF
6034 & 6036	Dollar Loan Center	2,243 SF
6038	New California Nails	1,230 SF



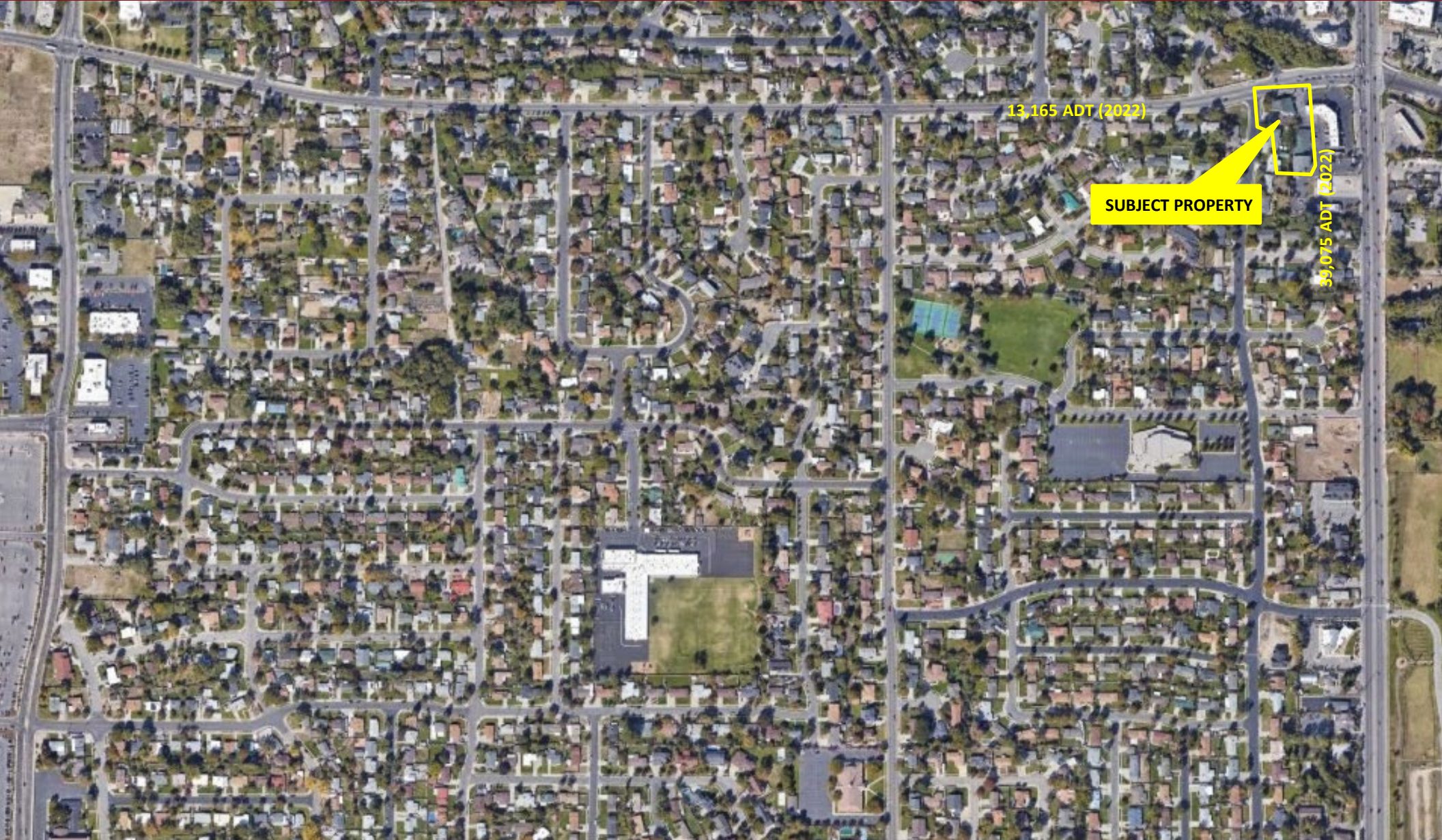
Roderick Realty  
SERVICES

www.roderickrealty.com  
801-506-5005

The information contained herein has been given to us by the owner or obtained from other reliable sources. We have no reason to doubt its accuracy but we do not guarantee it. Vacancy factors, projections, opinions, assumptions or estimates used herein are for example only and represents the current or future performance of the property. The value of this investment depends on tax and other factors which should be evaluated by your tax financial and legal advisors. YOU AND YOUR ADVISOR SHOULD VERIFY PROPERTY INFORMATION TO DETERMINE TO YOUR SATISFACTION THE PROPERTY FOR YOUR NEEDS.

# 9th & Vine

6000 South (Vine Street) 900 East, Murray, Utah 84107



Roderick Realty  
SERVICES

[www.roderickrealty.com](http://www.roderickrealty.com)  
801-506-5005

The information contained herein has been given to us by the owner or obtained from other reliable sources. We have no reason to doubt its accuracy but we do not guarantee it. Vacancy factors, projections, opinions, assumptions or estimates used herein are for example only and represents the current or future performance of the property. The value of this investment depends on tax and other factors which should be evaluated by your tax financial and legal advisors. YOU AND YOUR ADVISOR SHOULD VERIFY PROPERTY INFORMATION TO DETERMINE TO YOUR SATISFACTION THE PROPERTY FOR YOUR NEEDS.