

1214 VINE STREET

Murray, Utah 84121



FOR SALE OR LEASE
HIGH END OFFICE SPACE
4,610 S.F.

Roderick Realty
SERVICES

www.roderickrealty.com

801-506-5005

- Lease Rate \$22.00 SF / NNN or Purchase Price \$1,400,000 Immediate
- Access to I-215 / I-15, fifteen minute drive to Salt Lake International Airport, downtown Salt Lake City and ski resorts.
- Convenient to Restaurants, Intermountain Medical Center, Retail Shops & Services
- Private Office Suites with vaulted ceilings
- Kitchen-Break Room
- Conference Room
- Lots of Storage Space
- Excellent for Professional Office or Medical

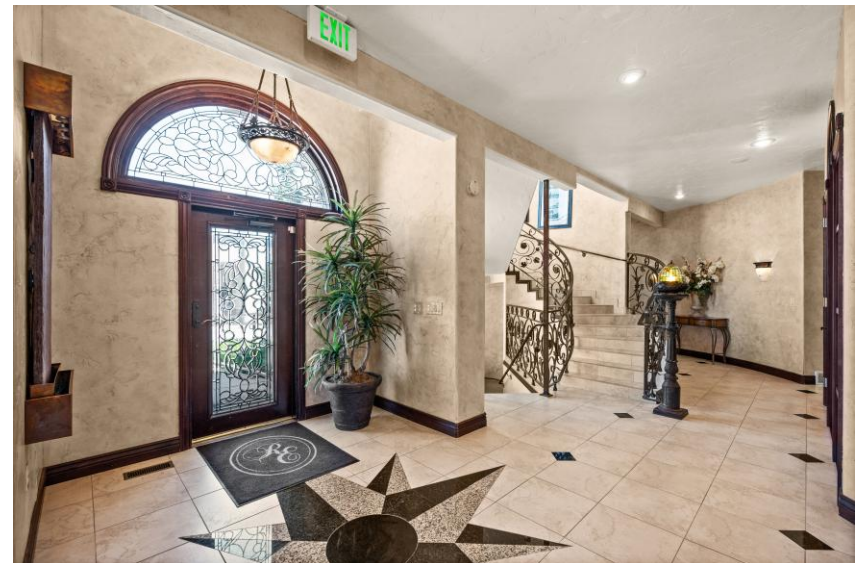


Benjamin Wheat

801-891-6596

benw@roderickrealty.com

1214 East Vine Street, Murray, Utah 84121



Roderick Realty
SERVICES
www.roderickrealty.com
801-506-5005

The information contained herein has been given to us by the owner or obtained from other reliable sources. We have no reason to doubt its accuracy but we do not guarantee it. Vacancy factors, projections, opinions, assumptions or estimates used herein are for example only and represents the current or future performance of the property. The value of this investment depends on tax and other factors which should be evaluated by your tax financial and legal advisors. YOU AND YOUR ADVISOR SHOULD VERIFY PROPERTY INFORMATION TO DETERMINE TO YOUR SATISFACTION THE PROPERTY FOR YOUR NEEDS.

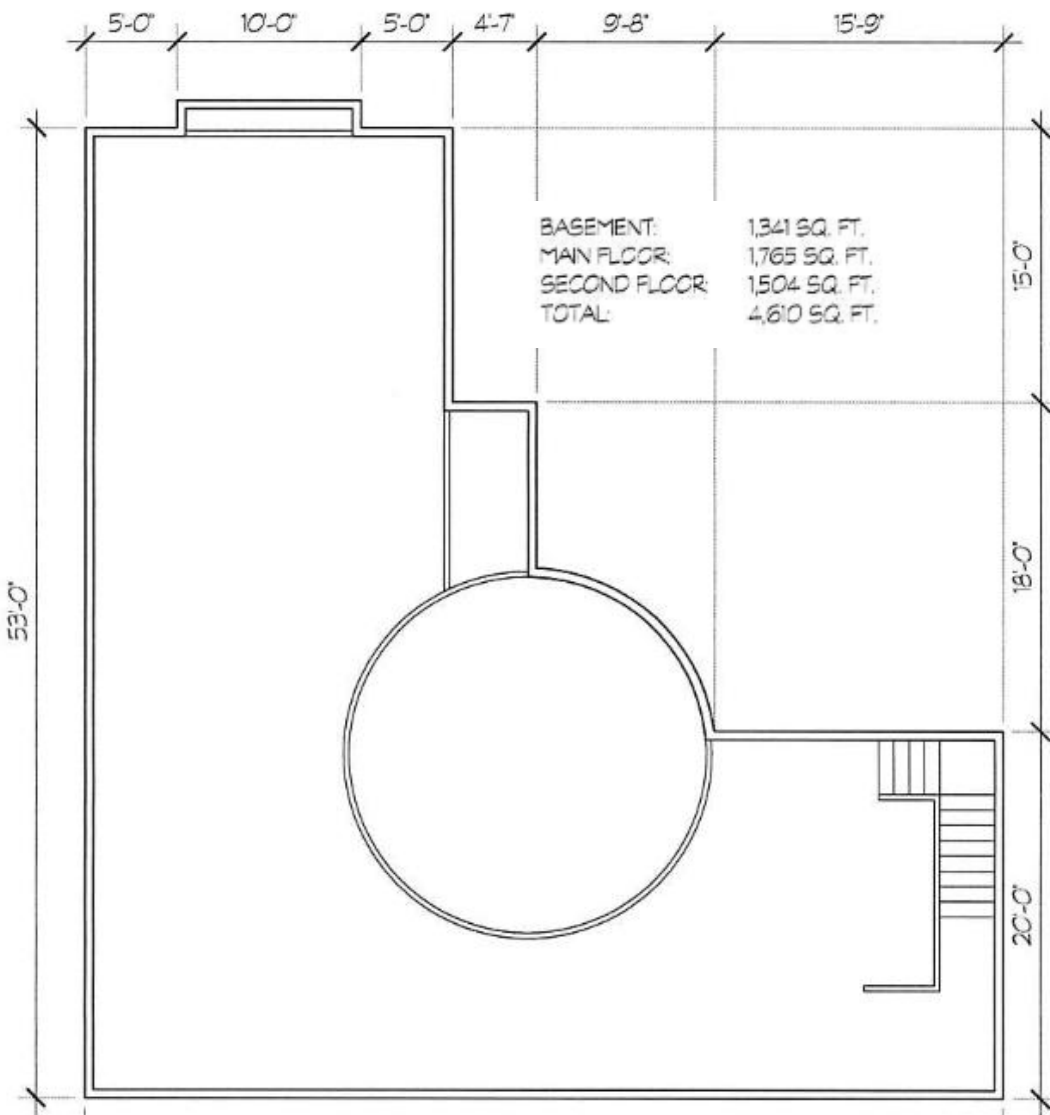
1214 East Vine Street, Murray, Utah 84121



Roderick Realty
SERVICES
www.roderickrealty.com
801-506-5005

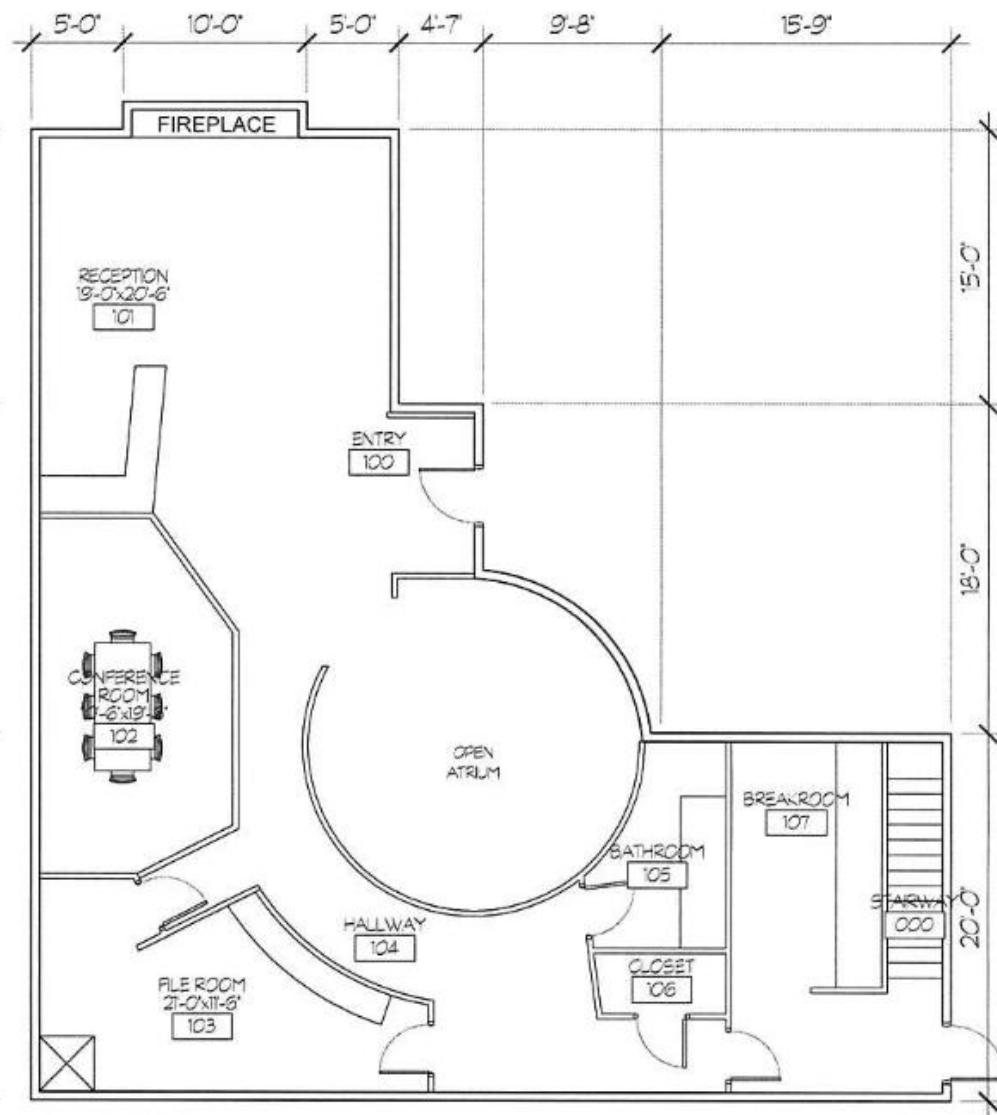
The information contained herein has been given to us by the owner or obtained from other reliable sources. We have no reason to doubt its accuracy but we do not guarantee it. Vacancy factors, projections, opinions, assumptions or estimates used herein are for example only and represents the current or future performance of the property. The value of this investment depends on tax and other factors which should be evaluated by your tax financial and legal advisors. YOU AND YOUR ADVISOR SHOULD VERIFY PROPERTY INFORMATION TO DETERMINE TO YOUR SATISFACTION THE PROPERTY FOR YOUR NEEDS.

1214 East Vine Street, Murray, Utah 84121



BUILDING 1214 BASEMENT PLAN

SCALE: 1/4"=1'-0"



2 BUILDING 1214 MAIN FLOOR PLAN

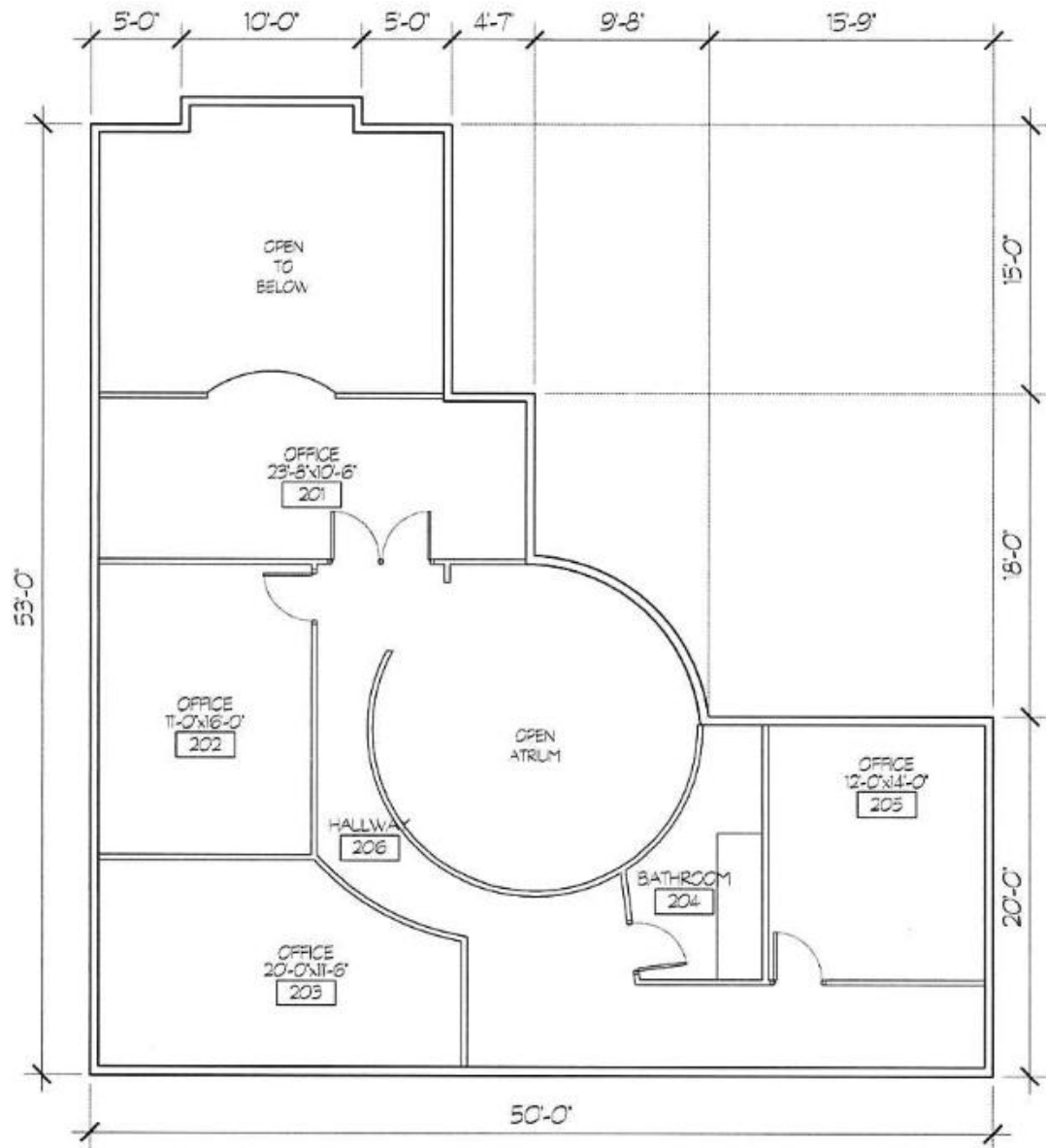
SCALE: 1/4"=1'-0"



Roderick Realty
SERVICES
www.roderickrealty.com
801-506-5005

The information contained herein has been given to us by the owner or obtained from other reliable sources. We have no reason to doubt its accuracy but we do not guarantee it. Vacancy factors, projections, opinions, assumptions or estimates used herein are for example only and represents the current or future performance of the property. The value of this investment depends on tax and other factors which should be evaluated by your tax financial and legal advisors. YOU AND YOUR ADVISOR SHOULD VERIFY PROPERTY INFORMATION TO DETERMINE TO YOUR SATISFACTION THE PROPERTY FOR YOUR NEEDS.

1214 East Vine Street, Murray, Utah 84121



BASEMENT:	1,341 SQ. FT.
MAIN FLOOR:	1,765 SQ. FT.
SECOND FLOOR:	1,504 SQ. FT.
TOTAL:	4,610 SQ. FT.

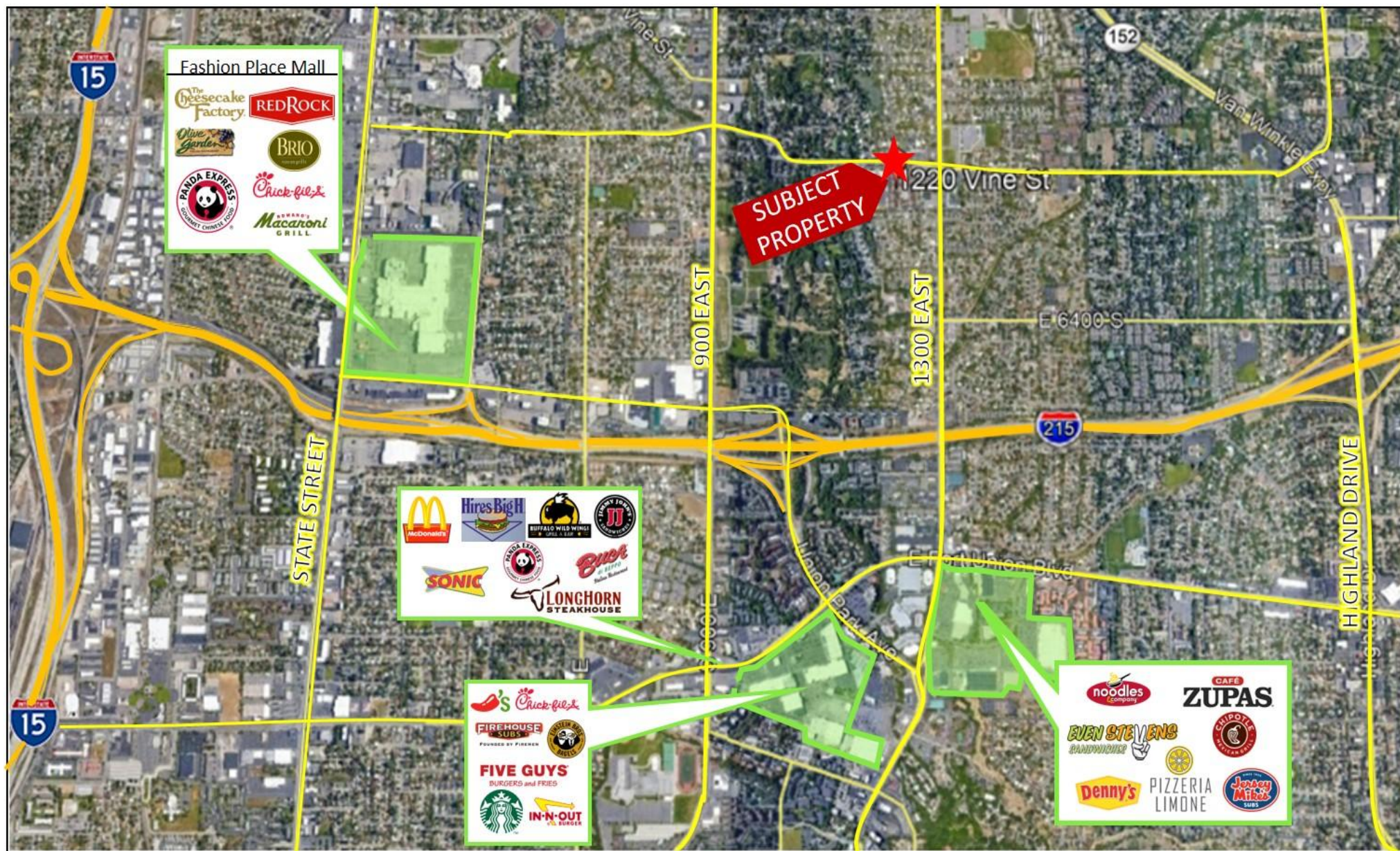
1 BUILDING 1214 SECOND FLOOR PLAN
SCALE: 1/8"=1'-0"



Roderick Realty
SERVICES
www.roderickrealty.com
801-506-5005

The information contained herein has been given to us by the owner or obtained from other reliable sources. We have no reason to doubt its accuracy but we do not guarantee it. Vacancy factors, projections, opinions, assumptions or estimates used herein are for example only and represents the current or future performance of the property. The value of this investment depends on tax and other factors which should be evaluated by your tax financial and legal advisors. YOU AND YOUR ADVISOR SHOULD VERIFY PROPERTY INFORMATION TO DETERMINE TO YOUR SATISFACTION THE PROPERTY FOR YOUR NEEDS.

1214 East Vine Street, Murray, Utah 84121



Roderick Realty
SERVICES
www.roderickrealty.com
801-506-5005

The information contained herein has been given to us by the owner or obtained from other reliable sources. We have no reason to doubt its accuracy but we do not guarantee it. Vacancy factors, projections, opinions, assumptions or estimates used herein are for example only and represents the current or future performance of the property. The value of this investment depends on tax and other factors which should be evaluated by your tax financial and legal advisors. YOU AND YOUR ADVISOR SHOULD VERIFY PROPERTY INFORMATION TO DETERMINE TO YOUR SATISFACTION THE PROPERTY FOR YOUR NEEDS.