

Springville Business Park #1

2057 West 700 South, Springville, Utah 84663



Roderick Realty

S E R V I C E S

www.roderickrealty.com

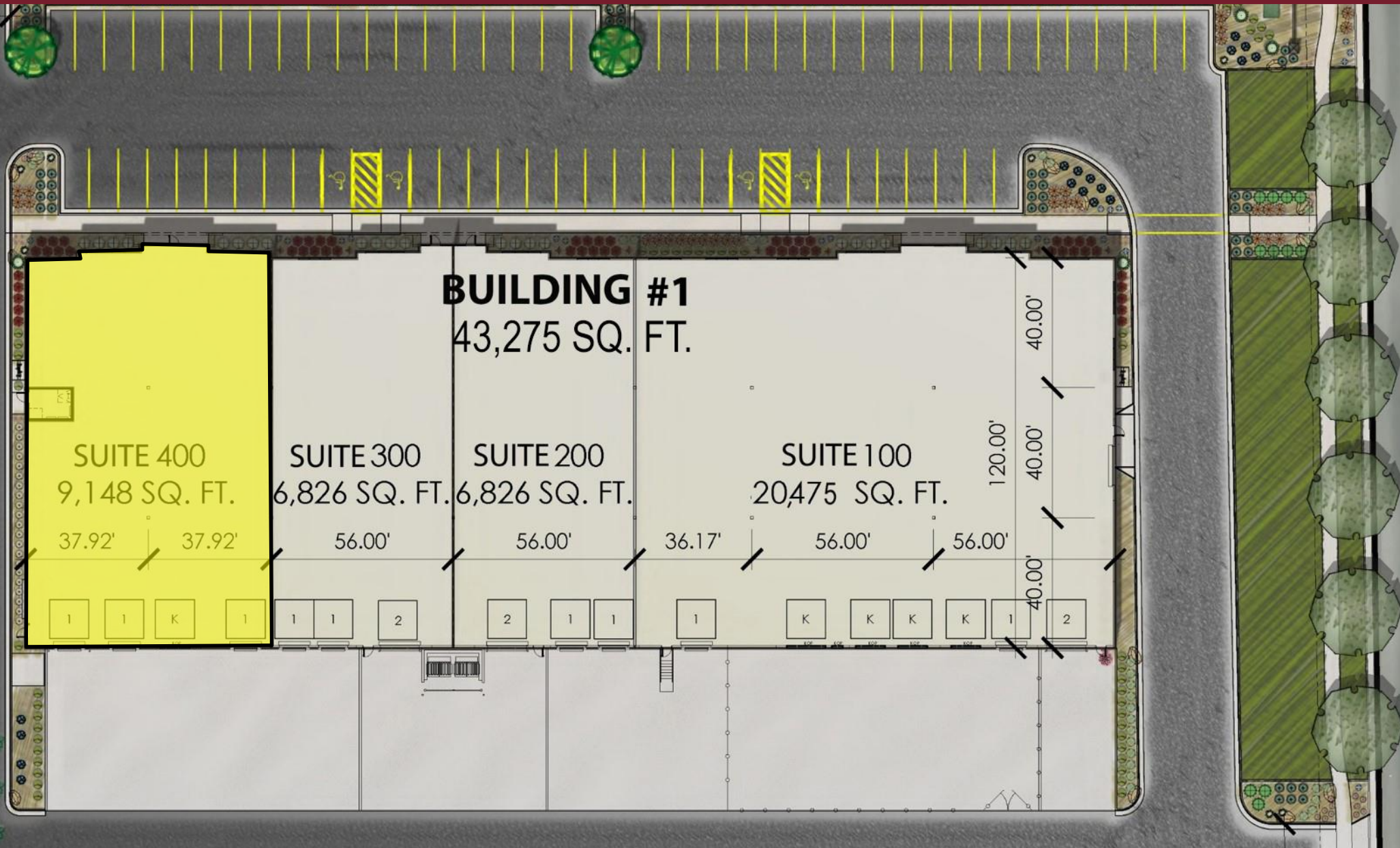
801-506-5005

- Class A Warehouse Space
- 3 Ground Level, 9 Dock-High Doors & 5 Knock Out Panels
- 24' Clear Height
- 56' X 40' Bay Size
- 43,275 S.F. (Divisible)
- Convenient access right off of Springville Exit
- I-15 visibility



Springville Business Park #1

Building #1: 2057 West 700 South, Springville, Utah 84663

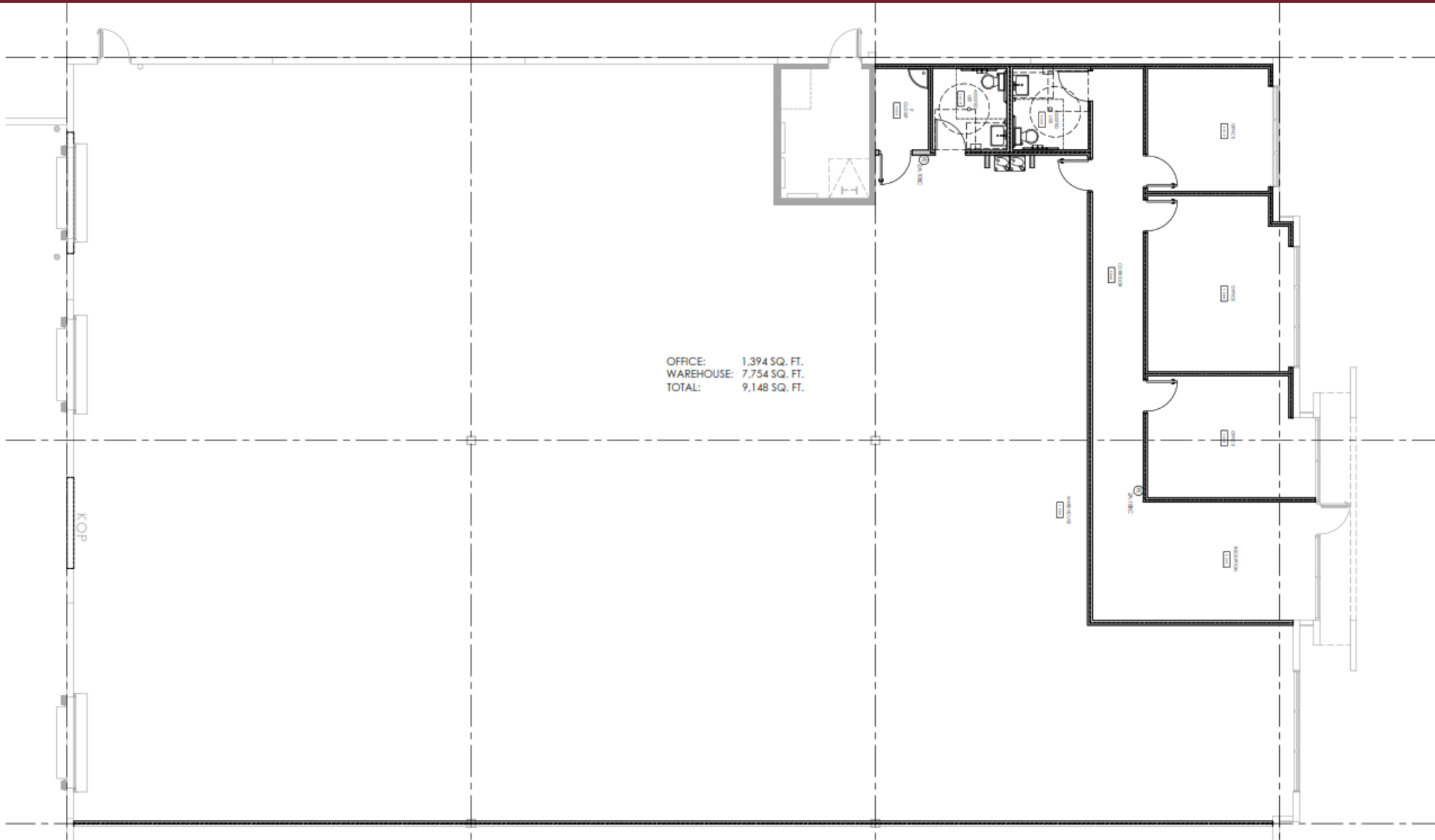


Roderick Realty
SERVICES
www.roderickrealty.com
801-506-5005

The information contained herein has been given to us by the owner or obtained from other reliable sources. We have no reason to doubt its accuracy but we do not guarantee it. Vacancy factors, projections, opinions, assumptions or estimates used herein are for example only and represents the current or future performance of the property. The value of this investment depends on tax and other factors which should be evaluated by your tax financial and legal advisors. YOU AND YOUR ADVISOR SHOULD VERIFY PROPERTY INFORMATION TO DETERMINE TO YOUR SATISFACTION THE PROPERTY FOR YOUR NEEDS.

Springville Business Park #1

Building #1: 2057 West 700 South, Springville, Utah 84663



Springville Business Park #1



www.roderickrealty.com
801-506-5005

value of this investment depends on tax and other factors which should be evaluated by your tax financial and legal advisors. YOU AND YOUR ADVISOR SHOULD VERIFY PROPERTY INFORMATION TO DETERMINE TO YOUR SATISFACTION THE PROPERTY FOR YOUR NEEDS.