



Pheasant Hollow Business Park

Building #1A: 9665 South 500 West, Sandy, Utah 84070- Suite 9665



Roderick Realty
SERVICES

www.roderickrealty.com
801-506-5005

- Class A Flex Space: office, retail, showroom, warehouse
- Ground Level & Dock-High Doors
- 24' Clear Height
- Easy I-15 and South Towne Mall Access



Pheasant Hollow Business Park #1A

9665 South 500 West, Sandy, Utah 84070



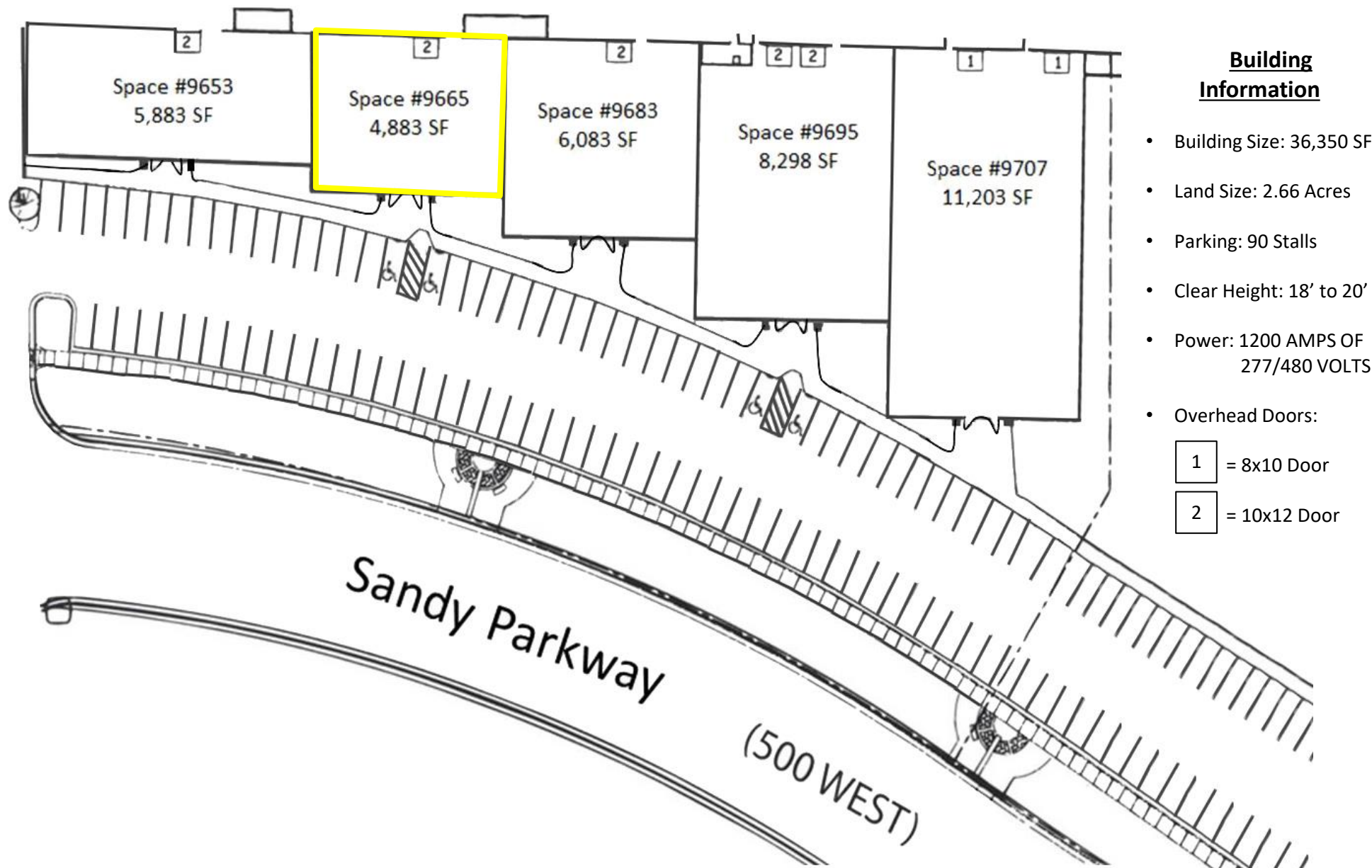
Roderick Realty
SERVICES
www.roderickrealty.com
801-506-5005

The information contained herein has been given to us by the owner or obtained from other reliable sources. We have no reason to doubt its accuracy but we do not guarantee it. Vacancy factors, projections, opinions, assumptions or estimates used herein are for example only and represents the current or future performance of the property. The value of this investment depends on tax and other factors which should be evaluated by your tax financial and legal advisors. YOU AND YOUR ADVISOR SHOULD VERIFY PROPERTY INFORMATION TO DETERMINE TO YOUR SATISFACTION THE PROPERTY FOR YOUR NEEDS.



Pheasant Hollow Business Park #1A

9665 South 500 West, Sandy, Utah 84070- Suite 9665



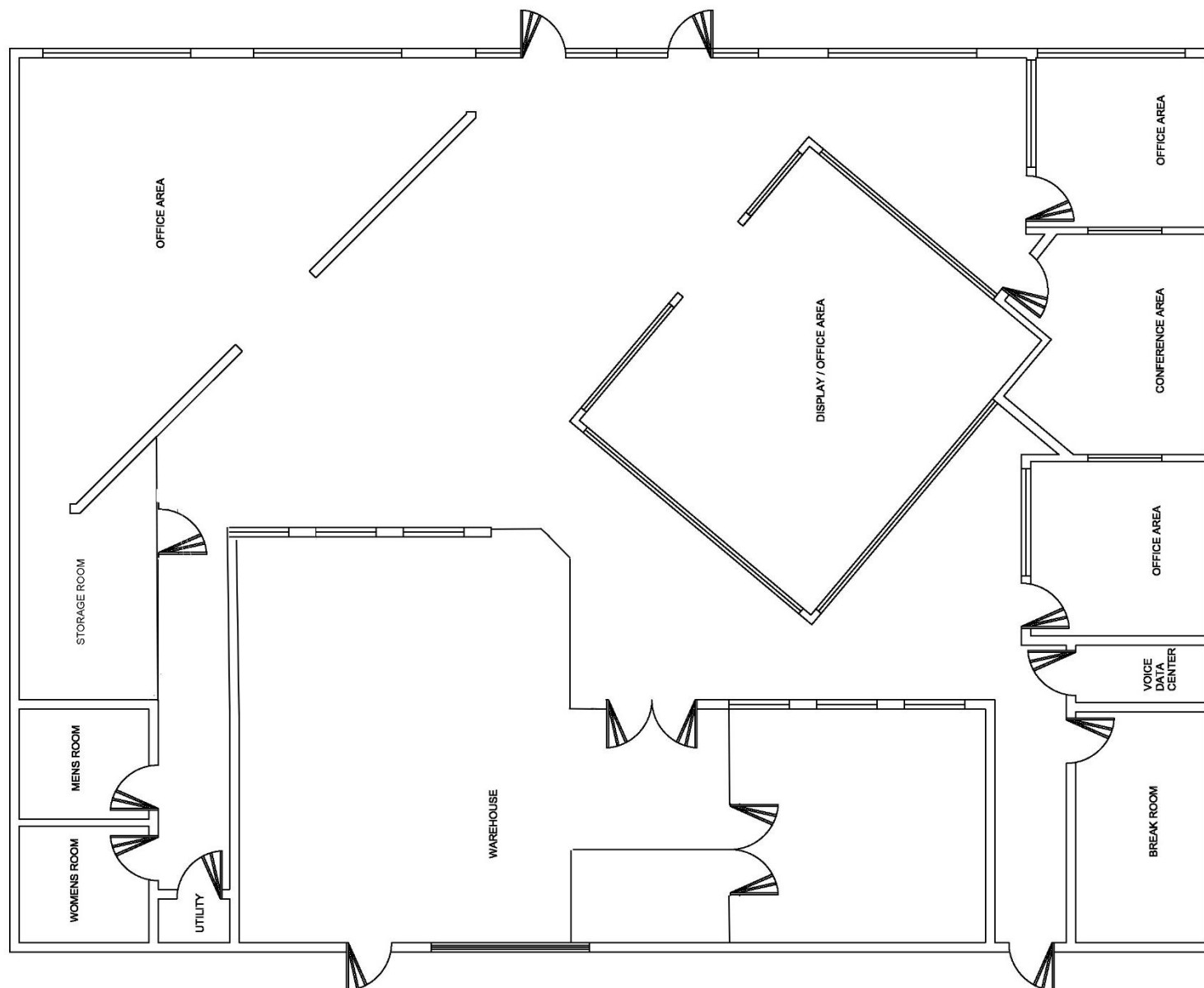
Roderick Realty
SERVICES
www.roderickrealty.com
801-506-5005

The information contained herein has been given to us by the owner or obtained from other reliable sources. We have no reason to doubt its accuracy but we do not guarantee it. Vacancy factors, projections, opinions, assumptions or estimates used herein are for example only and represents the current or future performance of the property. The value of this investment depends on tax and other factors which should be evaluated by your tax financial and legal advisors. YOU AND YOUR ADVISOR SHOULD VERIFY PROPERTY INFORMATION TO DETERMINE TO YOUR SATISFACTION THE PROPERTY FOR YOUR NEEDS.



Pheasant Hollow Business Park #1A

9665 South 500 West, Sandy, Utah 84070- Suite 9665



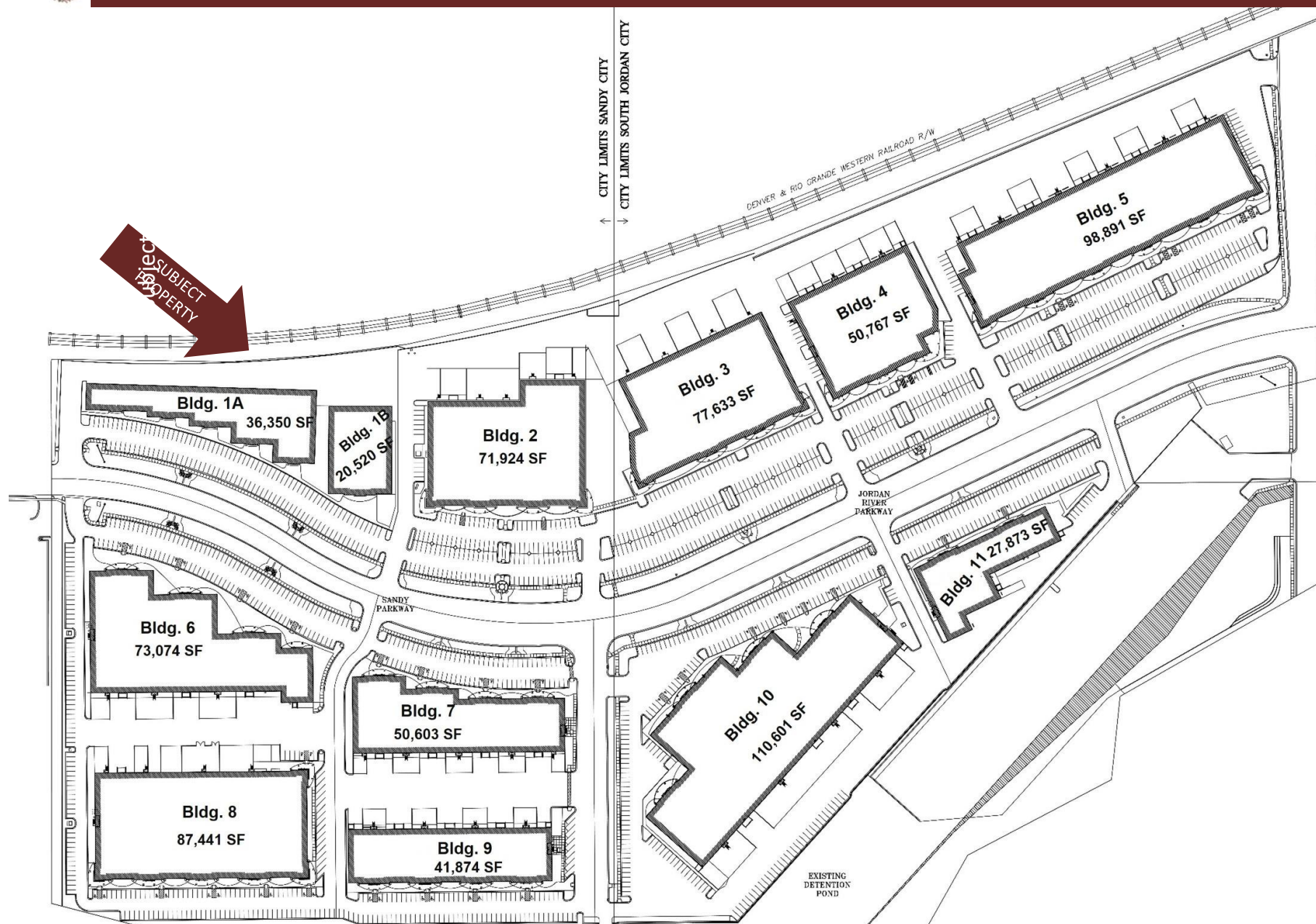
Roderick Realty
SERVICES
www.roderickrealty.com
801-506-5005

The information contained herein has been given to us by the owner or obtained from other reliable sources. We have no reason to doubt its accuracy but we do not guarantee it. Vacancy factors, projections, opinions, assumptions or estimates used herein are for example only and represents the current or future performance of the property. The value of this investment depends on tax and other factors which should be evaluated by your tax financial and legal advisors. YOU AND YOUR ADVISOR SHOULD VERIFY PROPERTY INFORMATION TO DETERMINE TO YOUR SATISFACTION THE PROPERTY FOR YOUR NEEDS.



Pheasant Hollow Business Park #1A

9665 South 500 West, Sandy, Utah 84070



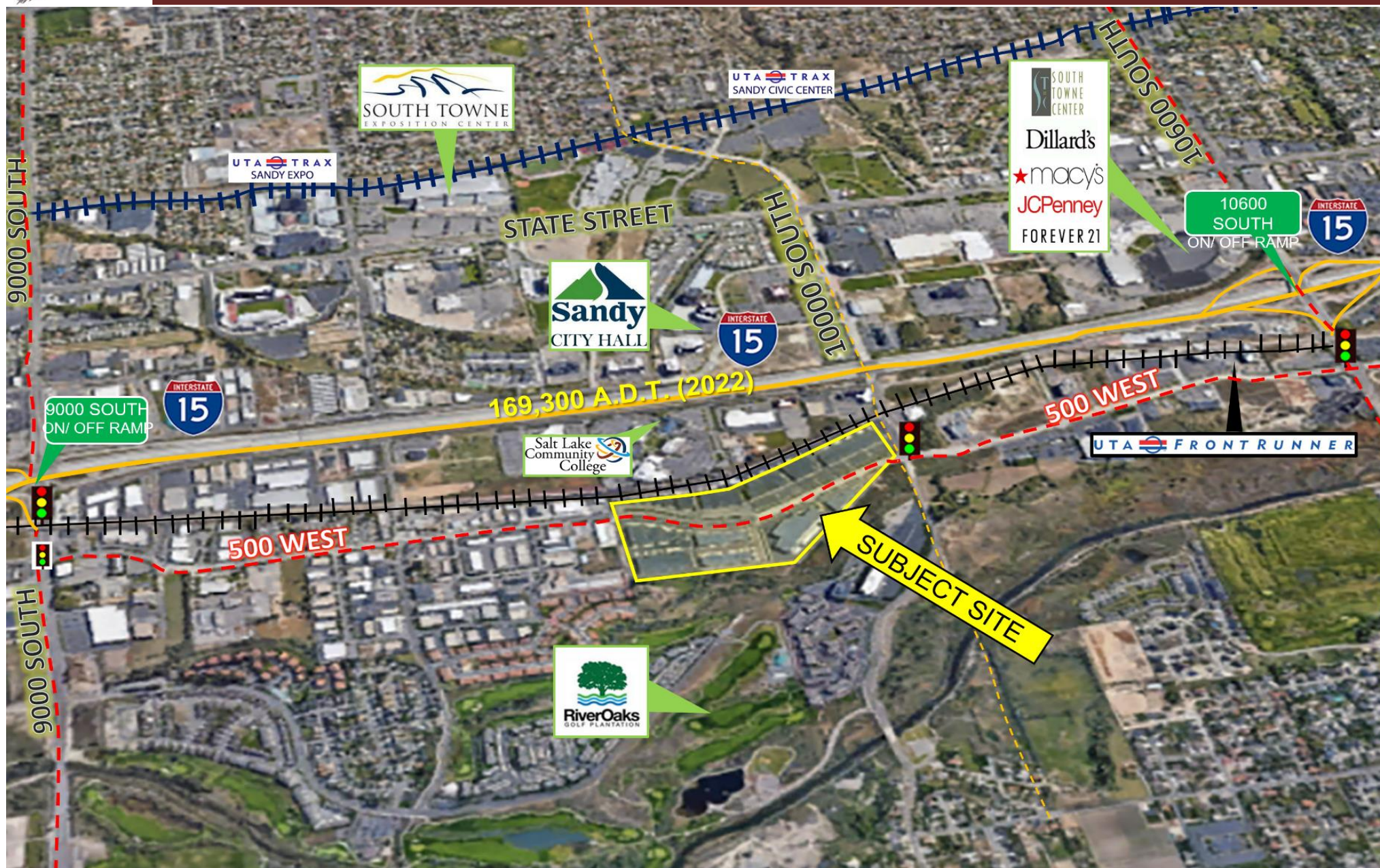
Roderick Realty
SERVICES
www.roderickrealty.com
801-506-5005

The information contained herein has been given to us by the owner or obtained from other reliable sources. We have no reason to doubt its accuracy but we do not guarantee it. Vacancy factors, projections, opinions, assumptions or estimates used herein are for example only and represents the current or future performance of the property. The value of this investment depends on tax and other factors which should be evaluated by your tax financial and legal advisors. YOU AND YOUR ADVISOR SHOULD VERIFY PROPERTY INFORMATION TO DETERMINE TO YOUR SATISFACTION THE PROPERTY FOR YOUR NEEDS.



Pheasant Hollow Business Park #1A

9665 South 500 West, Sandy, Utah 84070



Roderick Realty
SERVICES
www.roderickrealty.com
801-506-5005

The information contained herein has been given to us by the owner or obtained from other reliable sources. We have no reason to doubt its accuracy but we do not guarantee it. Vacancy factors, projections, opinions, assumptions or estimates used herein are for example only and represents the current or future performance of the property. The value of this investment depends on tax and other factors which should be evaluated by your tax financial and legal advisors. YOU AND YOUR ADVISOR SHOULD VERIFY PROPERTY INFORMATION TO DETERMINE TO YOUR SATISFACTION THE PROPERTY FOR YOUR NEEDS.